



THE

BROADWATER

COMMUNITY

CONNECTIONS

NEWSLETTER



Published by BCDC

Broadwater County Development Corp.

bcdc@mt.net

BROADWATER COMMUNITY CONNECTIONS NEWSLETTER

VOLUME 4, ISSUE 2

April 10, 2024

Organization - Page

Health Fair	- 2
Deep Creek Cemetery	- 3
Fair Update	- 3
Soil Amend. Class	- 3
Housing	- 3
Farmers Market	- 3
Tree Board	- 4
Senior Medicare Patrols	- 4
MVM	- 4
Library Open House	- 5
Mother Love	- 6
Canton Church	- 7
Radersburg School	- 7
ATV Run	- 7
Br. Comm. Theater	- 7
United Way	- 8,9
Frank Holloway	- 10,11
STOKE Update	- 11

Community Organizations

A—C	- 12
D—R	- 13
S—Z	- 14

Hello Everyone.

Welcome back to the Broadwater Community Connections Newsletter. I started this project with BCDC to coordinate all the non-profits in Broadwater County to assist in their fund raising and project coordination endeavors. I'm hoping this newsletter will be a catalyst for any non-profit, board, or community minded citizen to ask for or offer assistance, expertise or funds to benefit other organizations and share their ideas or needs. We all have the same drive and hope that we can make a difference for Broadwater County and, over the years, the little things we have done have made a huge impact for thousands of citizens. But there is so much more we can do. I have added some motivational quotes that I fit the focus of this newsletter. Please share your comments about how this newsletter can grow to meet these efforts. BCDC's email is bcdc@mt.net. My personal email is hahnsupply@mt.net.

I would really like to get this newsletter out to more people. Please share this with as many people as you can. If anyone isn't getting this but would like to be included, please send a request to either of my emails.

The next quarterly publication will be in April with special editions and notifications posted if necessary. I'm open to new ideas or if you would like to help with its production and publication, feel free to contact me.

John Hahn—BCDC co-chairman and treasurer

P.S. If I made any errors, in any of the articles, names and emails or formatting, I apologize in advance. Community organizations submitted and edited their individual submissions. I reserve the right to edit grammatical errors but will strive to preserve pertinent content.





Community
Health Fair
Saturday, May 18
10 am - 2 pm
TBD



Please join us
for health screenings, activities,
vendors, food, and much more.

If you would like to be a vendor,
please contact Jenni Hoff at (406) 603-4503.

Clinic Hours:
Monday - Friday • 8 am to 5 pm
Emergency Department:
Always open. Always ready.

billingsclinic.com/broadwater

110 North Oak Street, Townsend, MT, 59644

BROADWATER COMMUNITY CONNECTIONS NEWSLETTER

Deep Creek Cemetery



Recently the entrance to Deep Creek Cemetery received a face lift. The original sign created many years ago by Ray Gill was showing its age. The sign was refinished and attached to a new crossbar and supporting poles to enhance the entry into the cemetery.

The cemetery board is striving to keep the cemetery as beautiful as possible with a limited budget. Please help us in our endeavor by picking up your dogs dodo, removing dilapidated flowers, eliminate using glass vases/jars/bottles (as per DCCA policy) and consider donating to the cemetery as it receives no tax dollars from the county. Donation receipts are available upon request. Therefore, as we approach the Memorial Day holiday, please help us keep the cemetery beautiful so everyone can enjoy it. And don't forget to check out the cemetery's website at: deepcreekcemetery.com
Submitted by Craig Vietz

Broadwater County Fair Update

Although, it may seem like it's a long way away, it will be August before we know it! The Broadwater County Fair and Rodeo will be celebrating our 'Cowboy Boots & County Roots' in 2024. Fair dates are Wednesday July 31 - Sunday August 4th.

We plan on having another jewelry workshop hosted by J Rock Jewelry, a paint party hosted by Julie M. Farris, music by Travis Ragen, and back by popular demand, our second annual Pie Eating Contest! More information on the Fair Week schedule will be available in our Open Class Fair books, which will be coming out the first week of May. Open Class exhibit entries have a registration deadline of July 9th. Books will be available online and at local businesses. More information on locations will be available soon.

The Broadwater County Fair Board will be offering a FREE concert on Thursday August 1st. This year, the concert will be in the vendor area of the grounds, so bring a chair or blanket to sit on and enjoy the music. The concert entertainment will be announced soon! Make sure to follow our [Townsend Fairgrounds Facebook](#) page or check out our [Townsend Fairgrounds](#) website to stay up to date with all fair and rodeo announcements! We are yet again looking for local business sponsors to help offset the costs of entertainment provided during the fair. We want to keep our 'Under the Tent' entertainment free for all to enjoy. This also includes the STEAM activities, bounce houses, stick horse rodeo and other kid-friendly fun! We are also on the lookout for some great Commercial Vendors. Please contact the Fair office at fair@co.broadwater.mt.us or at (406) 266-9242 for a vendor or sponsor letter.

Jessica Erickson - Broadwater County Fair Manager

Soil Amendment Class

Sponsored by Townsend Hardware
April 17, 2024 6:30 pm in the Library Classroom
201 N Spruce Street

Free to the Public! This class discusses how a variety of soil amendments affect local soil. If you have specific questions you would like addressed during the class, please forward them to Monica Howick at monica@howick.org.

Developing Financially Attainable Housing in Broadwater County

April 23, 2024
6:00pm - 8:00pm
Broadwater School District Community Room

The housing committee group of the Broadwater Community Review invites local governments; financial, construction, real estate, and housing assistance leaders; and members of the public to join us for a discussion of and public input concerning, the group's efforts to develop a plan to meet the needs of Broadwater County residents who work and live in the area but cannot afford housing. Skyrocketing housing prices have created a substantial difference between our area's average family house buying power (\$8.90/hour) and the cost of housing (\$16.87/hour). This event will discuss how our community benefits from acting to provide attainable housing for the many employees we depend on without harming our community's rich heritage. Community input regarding attainable housing is sought and encouraged concerning the nature of this housing and where it could be located. A light meal is planned and we ask all interested people to please RSVP to BroadwaterAffordableHousingGroup@EmailDodo.com. Any questions about the event may be sent to the same email address or call JB Howick at (801) 690-5462.



Farmer's Market

Greetings from the Townsend Farmers Market. I would like to introduce myself as the new Market Manager. My name is Sheree Beauchamp from Hardway Farm and Smokehouse. I have been a vendor for the past 4 years with Hardway Farm and last year with Hardway Smokehouse. My husband Sam and I look forward to continuing the Townsend Farmers Market tradition in Townsend. The last thirteen years that Don and Chris ran the market was a blessing to the folks of Townsend and they will continue to come to the market with fresh produce, meat and eggs. This year we will be learning all the tricks of the trade to bring you the same quality as our predecessors Don and Chris Hettinger.

Our first Market day will be on Thursday, May 23, 2024 from 3pm to 6pm. Although we may have limited veggies we will have other items such as Connie's Creations, FFA (plants, woodworking, eggs) Jams/Jellies, home-made pies and deserts, baked bread, textiles, Hardway Smokehouse and so much more. Please stop by and visit the market and check out what our vendors have been working on through the winter.

If you are interested in becoming a Market Vendor please reach out to me by either phone or email below and I can answer any questions you may have and get you set up and ready to go. Looking forward to seeing old friends and meeting new ones as well.

Sheree 406-465-4977 or email: hardwayfarm@outlook.com

BROADWATER COMMUNITY CONNECTIONS NEWSLETTER

Townsend Tree Board News for Spring

The Townsend Tree Board is in the process of hiring Teri Blahnik, the Watering Queen, to water City trees again this year and she will be starting as soon as possible (See separate article on Water Trees Now!).

The Tree Board will be receiving its shipment of about 200 trees within the next three weeks. Townsend Hardware and Town and Ranch True Value will also be receiving their shipments soon. So, get ready for planting season!

Linda Southall is actively preparing for the Tree Board's annual Arbor Day/Weekend celebration which will be held May 2-5. The Tree Board is meeting on April 18th from 12-1pm at City Hall to continue planning Arbor Day/Weekend activities. Please come if you are interested. This year the Tree Board is receiving a Graymont Western US Carbon Reduction Fund Grant to help us purchase trees and Graymont employees and Broadwater County 4H students funded by Graymont will be helping us plant city trees.

Patrick Plantenberg, Tree Board Chair will also be working with Gemma Loughery's Broadwater County High School Horticulture class students in April and May teaching them some basics of tree pruning, tree planting, landscaping, etc. in case any of the students may be interested in working at garden centers, nurseries, or starting their own landscaping or arborist business.

Please contact Patrick Plantenberg, Townsend Tree Board Chair at 406-431-4615 if you have any questions.

Tree Board Needs Used Fence Posts

The Townsend Tree Board will be receiving its 2024 shipment of trees in April. For each tree planted they use 3 5-6.5-foot tall steel fence posts to stake the newly planted trees. They will be receiving about 200 trees and will need up to 500 fence posts. New fenceposts are running about \$10 each. If any of you Broadwater County ranchers have used fence posts that you think you will not need in the future the Tree Board could sure use them and would consider some payment for purchasing them.

Please contact Patrick Plantenberg, Tree Board Chair at 406-431-4615. Thank you for considering.

Water Trees Now!

The Townsend Tree Board is asking you to please water your trees. The soil is extremely dry. The good moisture we received last fall is gone.



Spring drought for trees is much worse than late summer and fall drought. The trees are actively taking up large quantities of moisture preparing for bud break and leaf emergence. The Townsend Tree Board has observed the birch and maple trees it pruned this winter are bleeding profusely now. So even though it is too early to turn on the sprinkler system, drag out that hose and water your trees, especially any young trees, to the drip line.

The Tree Board is in the process of hiring Teri Blahnik, the Watering Queen, to water City trees again this year and she will be starting as soon as possible.

Please contact Patrick Plantenberg, Tree Board Chair at 406-431-4615 if you have any questions.

The Crucial Role of Senior Medicare Patrols:

Volunteers Needed

Millions of Americans rely on Medicare for their healthcare needs, especially seniors. Unfortunately, these individuals can be vulnerable to fraud, errors, and abuse within the system. This is where Senior Medicare Patrols (SMPs) step in, serving as guardians against these threats and empowering beneficiaries to protect themselves.

SMPs raise awareness about healthcare fraud, waste, and abuse through outreach programs, workshops, and individual consultations. They equip seniors and their caregivers with the knowledge to identify suspicious activity and protect themselves.

Rocky's Agency on Aging is looking for Senior Medicare Patrol volunteers! To volunteer, you must be a regular member of a senior center in Lewis & Clark, Broadwater, or Jefferson Counties. If you are interested, please reach out to Dana at (406) 603-4157 for more information.

Submitted by Dana Reavis

Missouri Valley Marketing

It has actually been a very busy winter for MVM!

At the beginning of March MVM held a "Dinner and Murder" event at The Lodge. Over 30 people attended the role-playing event. Everyone had a terrific time! Big Sky Autism Project was a sponsor of the event.

We have begun planning for the 8th Annual County-Wide Yard Sale which will be held on Saturday July 20, 2024. If you are planning to have a yard sale/garage sale for a fund raiser rummage sale, please consider joining us on July 20. We do all the advertising locally and regionally; YOU keep all the profits.

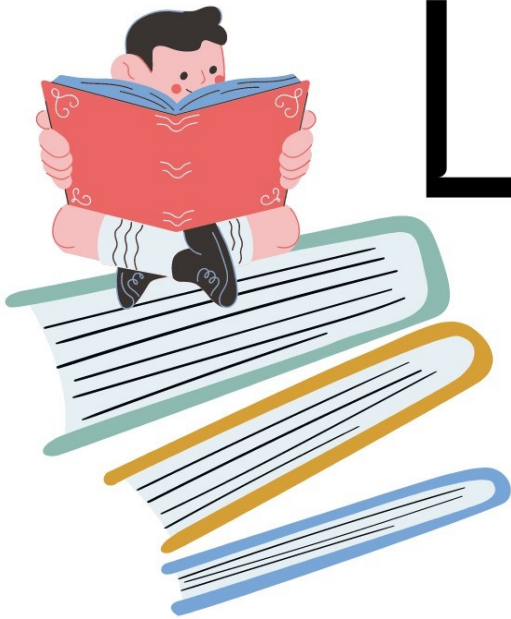
Missouri Valley Marketing also represents Broadwater County on the regional tourism organization – Southwest Montana. Southwest Montana is a state designated Destination Management Organization (DMO) comprised of 9 counties: Broadwater, Lewis & Clark, Madison, Jefferson, Beaverhead, Silver Bow, Deer Lodge, Powell and Granite counties.

The MT Department of Tourism is offering grants this year that are up to \$2.75 million dollars (over a 5-year period) for major projects that will promote/enhance tourism. This grant is for rural communities; so larger cities like Helena and Butte are not eligible.

MVM is forming a steering committee of local and regional organizations to apply for the grant: MVM, BCDC, The Helena Chamber of Commerce, Visit Helena, MBAC and Broadwater County as well as Southwest Montana have all agreed to be on the committee. We are hoping to have representatives from Townsend Rotary, Townsend Lions and the Townsend Area Chamber of Commerce, as well as business owners and community leaders.

Submitted by Vic Sample

"It only takes one person to mobilize a community and inspire change. Even if you don't feel like you have it in you, it's in you. You have to believe in yourself. People will see your vision and passion and follow you." – Teyonah Parris



LIBRARY OPEN HOUSE

201 N.
SPRUCE ST.

SATURDAY
APRIL 13TH.
1 - 3 PM

CELEBRATE
NATIONAL
LIBRARY WEEK
WITH US!

LEARN WHAT PROGRAMS ARE OFFERED
SEE WHAT RESOURCES ARE AVAILABLE
CREATE YOUR OWN BOOKMARK
PLAY GAMES WITH YOUR KIDS
EAT DELICIOUS TREATS
WIN PRIZES



BROUGHT TO YOU BY

BIG SKY. BIG LEADERSHIP
BROADWATER COMMUNITY LIBRARY

Offering Hope to Mothers & Children

Navigating Violence

By Jaime Gabrielli (she/her), Direct Services Advocate, The Friendship Center

Domestic violence is a public health crisis that impacts up to 20% of pregnant women. While most of us are aware of common risks associated with pregnancy, like gestational diabetes, preterm labor, and high blood pressure, many do not know that **homicide is the leading cause of death of expectant mothers in the United States.**

Because both moms and children in domestic violence situations face increased emotional and physical health risks, they need and deserve specialized perinatal and parenting support. However, finding a safe way to access resources and escape abusive relationships in these vulnerable circumstances can seem insurmountable. That is why building informed networks within our community that connect survivors and their kids with the help they need is critical.

When advocates at The Friendship Center assist clients who are pregnant or parenting small children, we are fortunate to have a stellar resource to refer people to in Healthy Mothers Healthy Babies—[The Montana Coalition](#) (HMHB-MT). HMHB-MT works across the state to promote healthy beginnings and improve the safety and well-being of mothers and families. One exciting way they support families is through the powerful storytelling they share on the *Mother Love* podcast. Hosted by the insightful and big-hearted Claire Larson, *Mother Love* has for the past four years been a space where guests speak honestly about parenting challenges and how these issues can impact maternal and newborn health.

Recently, our Executive Director Gina Boesdorfer and I had the opportunity to join Claire on *Mother Love* to talk about the ways domestic violence, sexual assault, and stalking present significant threats and health concerns to expectant mothers and children. We also had the privilege of sharing the spirit of hope we witness as our clients overcome these challenges and reclaim their lives. Our conversation was the first of two episodes dedicated to this important topic.

In the second part of this double-header, former TFC client Lisa Croke joined Claire to talk about her remarkable and courageous journey as a mother and survivor of domestic violence. Her firsthand account unveils the complex and covert nature of domestic abuse and is a poignant reminder that intimate partner violence can happen to *anyone*. Lisa's story of resilience and perseverance is a testament to TFC's steadfast belief in the power of survivors to reclaim and define their own lives. It also shows the unstoppable hope and strength in a mother's love for her children.

We hope listeners will gain a better understanding of the complicated and dangerous reality parents living with domestic violence face every day and how—directly and indirectly—this issue impacts every one of us. By recognizing the true nature of intimate partner abuse and providing support and compassion to survivors, **we can all contribute to healthier beginnings and help families move beyond surviving, to thriving.**

We're so thankful to Claire and the HMHB-MT team for making space to talk about these issues with open hearts and open minds, and we're especially grateful to Lisa for sharing her story. We know you will find it as awe-

inspiring as we do. Visit thefriendshipcenter.org/hmhb-podcast for more resources and links to both episodes or listen wherever you find your favorite podcasts.

If you or someone you know is experiencing domestic violence, sexual assault, or stalking, advocates at The Friendship Center are ready to help. Visit thefriendshipcenter.org or call **406.442.6800** to learn more about our free and confidential services available 24/7.

Visit hmhb-mt.org to learn more about resources and support available for mothers and newborns across the state from Healthy Mothers Healthy Babies.



thefriendshipcenter.org/hmhb-podcast

“He who masters the power formed by a group of people working together has within his grasp one of the greatest powers known to man.” – Idowu Koyenikan

“I used to be a classic workaholic, and after seeing how little work and career really mean when you reach the end of your life, I put a new emphasis on things I believe count more. These things include: family, friends, being part of a community, and appreciating the little joys of the average day.” – Mitch Albom

“Without community service, we would not have a strong quality of life. It's important to the person who serves as well as the recipient. It's the way in which we ourselves grow and develop.” – Dorothy Height

“The greatness of a community is most accurately measured by the compassionate actions of its members.” – Coretta Scott King

Canton Church



It's been an uneventful winter for the Canton Church. Now that spring is here we will start planning our summer event schedule.

There are several improvements that we have been discussing

for the Canton Church including running a power line closer to the back door to eliminate the extension cord that is always a tripping danger.

Anyone interested in being involved with the Historic Canton Church can contact Vic Sample at 406-422-9425 or victorsample@gmail.com

Radersburg School History Outing

On May 13, four Broadwater County Historical organizations are joining together to sponsor 4th annual Middle School history outing in Radersburg. Preserve Broadwater History, Broadwater County Museum, Radersburg Historical Preservation, Inc. and the Radersburg Cemetery are all participating.

Radersburg has a rich history. It was one of the first incorporated cities in what is now Broadwater County. At one time Radersburg had a population of over 2500 people and served as the county seat for Jefferson County. Radersburg has some of the oldest buildings in Broadwater County.

The seventh grade students study Montana History. This outing is a chance for them to visit the historic town and learn more about the history of Radersburg.

Radersburg Historical Preservation is opening the Radersburg School House and Methodist Church for the outing. Linda Huth, curator of the Broadwater County Museum, will make a presentation about the history of Radersburg at the historic school.

Preserve Broadwater History will serve the students a lunch of hamburgers, hotdogs, chips, cookies and water. In the past, Bob's Supermarket has donated \$100.00 worth of food to the event.

After lunch, the students will visit the Methodist Church and learn about Brother Van Orsdell and the opening of the Radersburg Methodist Church.

From there, everyone will visit the Radersburg Cemetery where Jackie Smith will give a presentation of the cemetery and the Radersburg Cemetery will provide the students with an ice cream treat. Afterwards, the students will do a "search" through the cemetery looking for various targets.

Submitted by Vic Sample

"Too often we underestimate the power of a touch, a smile, a kind word, a listening ear, an honest compliment, or the smallest act of caring, all of which have the potential to turn a life around." – Leo Buscaglia

Annual ATV Poker Run on 8 June

The annual ATV Poker Run will start from the County Fair Grounds at 9:00 AM on Saturday, 8 June. The doors will open for check-in at 7:30. Registration can be done online at townsendmtchamber.com to secure your place in the run. Or you can wait to register in person prior to the run. Just be aware, the number of entrants is limited to 300 vehicles. The cost is \$20 per vehicle (regardless of the number of people in it) and \$20 for each poker hand. First place is \$1000 cash with more cash and prizes awaiting those lucky enough to select a winning poker hand.



This year the run will be 100 miles through the Big Belt Mountains. This is a family-oriented event, not a race. Sufficient time is allowed for participants to enjoy the trip and companionship. Your time in these mountains will reveal some of the most beautiful country Montana has to offer. Plus, you'll be rubbing elbows with some of the most gracious and friendly outdoor-loving people in the Treasure State. If you haven't done this before, now is the time to start. Bring the whole family and the dog. Your ATV needs to be street legal because we do use country roads and forest service trails. Sorry, but no motorcycles, jeeps, or other specialty vehicles. Safety gear is recommended, but not required. Food and liquid refreshments will be available for purchase at the conclusion.

The Townsend Area Chamber of Commerce sponsors this very popular event with participants coming from across the state and beyond. Proceeds are split between our local 1st responders: local Ambulance Fund, the Volunteer Fire Department and Search and Rescue.

Contact 521-0935 for information. Submitted by Bob Saxby



Broadwater Community Theater

BCT has had a few fundraisers this year with the St. Patty's Day Dinner (with Pat Plantenberg as St. Patty of course) and the Queen City Swing Band at the Lodge. Everyone who participated had a great time. BCT has a very large and active board and will be hosting the Missoula Children's Theater this year as the school has decided not to. This will be in May. Other local plays are in the works too.

BROADWATER COMMUNITY CONNECTIONS NEWSLETTER

United Way of Lewis & Clark Area

Our region is facing significant challenges in housing stability. With 164 unsheltered individuals in the Lewis & Clark area and approximately 100 individuals in Helena struggling to find housing despite having a housing voucher, the need for action is clear!

The pandemic and economic pressures have only exacerbated the affordable housing crisis; with a 35% increase in rent costs in 2021-2022, and 69% of low-income individuals burdened by rent costs.

Our mission at the United Way of the Lewis & Clark Area (UWLCA), is to unite resources, organizations, and people to transform our community for good, and we are embarking on a monumental endeavor through our Housing First Capital Campaign, to do just that!

Our goal is to purchase the Helena Inn and transform it into Permanent Supportive Housing (PSH) for Helena.

Our answer to helping the housing crisis in Helena, is not just about providing shelter; it's about creating a foundation for positive change.

By purchasing the Helena Inn and converting it into apartments, we will be able to offer over 40 units of stable, affordable housing. This initiative will not only house those currently experiencing instability but also provide support for veterans, and youth aging out of foster care, etc.

We will also be partnering with different agencies such as the Helena Housing Authority, Many Rivers Whole Health, and Purview, among others, to help bring necessary services and support to our tenants, in alignment with the PSH model.

The impact of PSH extends far beyond housing stability. Tenants experience improved employment rates, better physical and mental health, stronger community connections, and increased overall well-being. This model not only saves lives but also reduces costs associated with emergency services and incarceration, revitalizes neighborhoods and empowers self-sufficiency.

Submitted by Emily McVey

"If you want to go quickly, go alone. If you want to go far, go together." – African Proverb

"That is part of the beauty of all literature. You discover that your longings are universal longings, that you're not lonely and isolated from anyone. You belong." – F. Scott Fitzgerald

"Human kindness has never weakened the stamina or softened the fiber of a free people. A nation does not have to be cruel to be tough." – Franklin D. Roosevelt

"I've learned that people will forget what you said, people will forget what you did, but people will never forget how you made them feel." – Maya Angelou

The Problem



The Solution



48 Units



Stability
housing, life, services



Voucher use



Housing for Kids
Aging Out of Foster Care



Immediate Use



Affordable Rent



Room to Grow



Program Transitions for clients in programs like (YWCA, Family Promise, etc.)

The PLAN



Frequently Asked Questions

1. **This project will not solve all of Helena's housing issues.**
 - a. This project will become an important asset in the community but will only be able to house ~48 individuals or small families.
 - b. There are four layers of housing needed 1. Emergency Shelters 2. Transitional Housing 3. Permanent Supportive Housing (Helena Inn project) 4. Permanent Housing
2. **Who will likely live in this facility?**
 - a. People that qualify for a variety of vouchers through Housing and Urban Development (HUD) programming.
 - b. People who need low income or income-based housing who live and work in our community.
 - c. Housing Vouchers are only available to people who meet specific criteria, including: being low income, a US citizen, or non-citizen who falls within specific categories and has an eligible immigration status.
3. **What is a voucher?**
 - a. A form of rent subsidy that helps low-income individuals, families and seniors. The amount of the voucher is based on the renter's income and the market rate of the rental.
4. **What is Permanent Supportive Housing vs Transitional Housing?**
 - a. Transitional Housing is, by definition, temporary. It is used to bridge a gap from a crisis into permanent housing.
 - b. Permanent Supportive Housing is a model that combines affordable housing with voluntary support services. It serves people with a history of homelessness and helps them achieve housing stability, independent living and community
5. **Why this project?**
 - a. MT is short 16,629 rentals for people that are Extremely Low Income (30% AMI). approximately 1,100 of those are needed in Lewis and Clark County.
 - b. The 2023 Point in Time Survey showed 164 unsheltered individuals in Helena.
 - c. 70% of our unsheltered neighbors are from the State of Montana. We need to house our neighbors.
 - d. This facility can house at least 48 people.
 - e. It is being fully inspected to guarantee safety for long term, sustainable housing.
 - f. There are over 2 acres of land on this property that will allow for us to expand services for our community in the future.
 - g. The price for this facility was comparable to the cost of other similar facilities in the community.
 - h. The facility is within walking distance to necessary services.
6. **Does the availability of this kind of facility attract more unsheltered people to our community?**
 - a. There is no statistical evidence to support the misinformation that: "If you build it they will come."
 - b. There are currently at least 40 people in our community trying to use housing vouchers for studio or 1-bedroom apartments. There are over 500 people on the 1-bedroom waitlist for Red Alder Housing. We can fill this facility with people who already live here.
7. **Who will run and operate this property?**
 - a. The day-to-day operation of this facility will be a community wide effort, organized by the United Way. Most services will be contracted out or performed under an MOU with community providers.

Other Questions?

If you have a question we did not cover here – feel free to reach out to the staff at the United Way. Where we will find an answer for you! info@unitedwaylca.org

BROADWATER COMMUNITY CONNECTIONS NEWSLETTER

Frank Holloway - Volunteer Extraordinaire

A few times I have been asked to write something about Frank Holloway and I am happy to do so.

He was my grandfather. But not really; he was my step grandfather; my mother's father died before I was born and my dad's father died when I was pretty young, so Frank Holloway is the only "grandfather" I really ever had.

In her bible my mother kept obituaries and/or funeral programs of those who were dear to her. I knew she had Grandpa's obit in there so when I went to get it to help with information for this article, I thought it was interesting that I opened the bible to the EXACT page of his obit and there are a lot of obits in this little bible. It is a travel through time...for sure.

His obituary tells us that he was born in Daventry, England on June 11, 1890, the son of John and Annie Holloway. He died at his home in Townsend on November 21, 1980.

When he was a young boy, his father left the family. They were very poor and as a result, there was no waste in his life!!! Because of having been so poor, when Frank saw a single glove, piece of wire, piece of wood on the street, he picked it up and brought it home. After he died, the family found all sorts of these "prizes" tucked neatly in the corners of the sheds in the yard.

He had a fetish for wood, probably because he was so poor as a child and they couldn't get wood in England. Grandpa and Grandma burned wood in their home. They heated with it and cooked on a wood stove. There was no other heat or cooking source in the house. At that time, people could go to the mill here in Townsend and get wood for free. Frank's yard was packed with wood from the mill. The piles were all neatly stacked according to size. His partner who went with him to get wood was Terry Love.

Terry reminded me of his "Frankisms" and unfortunately, I only remember "Linda did you look out the winda", but there were many, many more.

He had three cars, a Model T; a black 1938 Buick, which he bought new; a 1950s Plymouth. But he walked everywhere, except to get wood and on his Assessor visits.

He was a perfect grandfather. At Christmas time, my younger sister and I would join him and we would walk all around town to look at the Christmas decorations. She and I would stop at their house at noon when we were returning to school. He always had a treat for us; a piece of candy for me and a pickle for her because she liked pickles!! They took us to Helena to the Vigilante Parade one year. AND HE TOOK HIS CAR!!! He drove pretty slowly and all of the cars on the highway were passing us. He wondered if he was backing up. He had a terrific sense of humor!

I can't begin to name the local organizations he served. I was surprised when I read in his obituary that he was a member of the Episcopal Church, American Legion and Auxiliary; VFW and Auxiliary, Masonic Lodge, and was an honorary member of the Fire Department, Rotary, Order of Rainbow for Girls and Jaycees. Although these are more organizations than many people are affiliated with, I would have thought he belonged to more. And he did, but not "officially", I guess.

I found an article from the "Townsend Star" that described him as follows:

"Santa Claus, coffee maker, ticket seller and taker, fireman, very good neighbor. Anyone in Broadwater County would recognize who was being described". It further states: "Are you sick in the hospital? Frank will probably be in. Is Rainbow, Star, LDS ladies, ANYONE giving a dinner? Frank's in the kitchen. Are the firemen, chamber, rodeo association, March of Dimes having a function? Frank is selling and taking tickets. Is someone home alone and not too strong? Frank is running errands. Did you see Santa go by? Where's Frank?"

This paragraph pretty much sums it up. He worked for and with everyone.

In February 1971 the American legion and Auxiliary hosted an event to honor him at a reception at the Legion Club. In their article in the "Townsend Star" about the reception they said, among other things, "For many years Frank has helped virtually every organization in town with whatever project they have under way. He need not belong to the group, or

church or association, but when there is work to be done, he's the first one there and the last one to leave. He's poured a lake full of coffee, washed enough dishes to reach to the moon and back, sold tickets to everything that has ever happened in Townsend, weighed fish, cleaned lawns, carried wood and brought groceries."

Mayor Rudy Lundborg presented Frank with a framed copy of a proclamation which made February 14, 1978 "Frank Holloway Day" in Townsend. During the program it was noted that Mr. Holloway recognizes no generation gap, visiting with Head Start children and senior citizens.

In the February 17, 1978 "Your Time", a supplement to "The Independent Record" and the "Townsend Star" there was a lengthy article entitled: "Frank Holloway Fills His Leisure with Work". This article is a wealth of information about Frank. It, not only, clarified some parts of his life of which I was uncertain, but it also verified a lot of what I have said.

Some quotes from the article follow:

"I'm no house plant," Frank Holloway says, laughing. "I like to keep busy".

"Anybody that's 87, eats good and sleeps good and gets around like I do is lucky,". "That's what keeps a person young - keeping busy."

With a twinkle in his age-clouded eyes, Holloway explained that some of those activities are because "I like to be around food".

The same reasoning surfaced to explain why Holloway liked his job as county assessor. For 32 years he traveled the county as the dreaded tax assessor. But he wasn't treated with loathing. Instead he was fed". He was a tall, slender man and he loved to eat! I have wondered if he planned his visits so he would arrive at noon to the places that housed the best cooks in the county and he knew who they were!

"They knew it (tax assessment) was something that had to be done," he said. "I used to eat dinner with them - sometimes supper too. It was wonderful!"

But the farmers and ranchers had at least one reason to treat Frank kindly. "There is hardly a rancher in the valley who hasn't had him help at least one day", said his wife, Hazel.

Starting during World War II, he would do his work in the assessor's office and then go out and work on ranches and he never accepted any pay for the work.

The work was familiar. As a 20-year-old newcomer to North America in 1911, he made his living as a ranch-hand, migrant worker. He said he had no reason to leave England, "I just got it in my head I would come to Canada," where he had two uncles, who lived near Montreal. He came to the United States in 1914.

"Traveling around, he finally ended up near Fort Benton, where he lived until World War I struck and he enlisted in the Army.

While in the Army he suffered from a mustard gas attack and spent many months in a facility recuperating.

"When he was released from duty he returned to Montana to the Lincoln area for a year and then wandered between Canada and Montana for a while. At one time he said "The last day we thrashed it was 10 degrees below zero. They were hauling wheat out on sleds".

"For a time, he followed the wheat harvest on a thrashing crew. In 1922 the trek ended with a trip to Canyon Creek, Montana with a job with the Sieben Livestock Company. He made the acquaintance of a young lady by the name of Hazel Bruce, who cooked for the Sieben Livestock Company.

"The acquaintance led to marriage and they settled in Townsend, where Hazel had grown up.

"He was a trifle worried about this and said 'Jack of All Trades and master of none'. He had to find a job to support his new wife. First, the couple took to managing a restaurant, then he worked at a grocery store, the Cash 'n' Carry. He said 'I didn't know any more about a store than that chair does.

In 1934 he filed for Broadwater County assessor. and won. He remained in this position until he retired after 32 years and then he served as Deputy Assessor.

"He served for 36 years as a volunteer with the fire department. For 25 years, he played Santa Claus for the American Legion. He could be seen on Main Street ringing the bell for donations to the bucket that collected funds to help the needy during Christmas. (Continued Next Page)

BROADWATER COMMUNITY CONNECTIONS NEWSLETTER

(Frank Holloway—Continued from Previous Page)

“He enjoyed going out on Christmas Eve and visiting homes as Santa to give joy to kids. He said: ‘If I can give joy to a little kid at Christmas time, why it gives me joy, too’”.

In this article he is quoted as having said: “People’s been good to me. The country’s been good to me. I’ve done a little of everything and I’ve enjoyed it all. Life’s been good to me. I’m glad to do what I can to help”.

In March of 1978 he was one of seven Montanans awarded the first the 1978 Jefferson Award for the state.

In the letter to him telling him he had won they offered a brief description of the award:

“Each year, the American Institute for Public Service presents Jefferson Awards (so named after Thomas Jefferson) in several categories, one of which is the Greatest Public Service Benefiting Local Communities. The Montana Television Network is co-sponsor with the Institute in Montana. The goal is to reach into local communities across the country to reward initiative and leadership at the local level. The thrust of these awards is to identify community people, average citizens, who are performing significant public services, predominately without recognition.”

This award was presented to him by Governor Judge at the State Capitol in Helena on March 27, 2978.

After he died the Townsend Rotary Club established a fund for a scholarship to a graduating senior at the Broadwater High School in his honor. The purpose of the award is to establish a permanent memorial to honor Frank H. Holloway, whose life in this community provided one of the finest examples of the very purpose of Rotary, “Service above Self”.

Also after he died, a park in Townsend was named after him. The park on D Street with the Skateboard facility, soccer field, and sometimes an ice-skating pond is Holloway Park. Frank Holloway’s name lives in a scholarship awarded by the Rotary Club to a graduating senior each year.

This article has been difficult to do because there is so much more to say, but not enough room. Hopefully, it will inspire everyone to take some time to be of service to others.

Submitted by Linda Huth

STOKE, were well disciplined in the STEM program to move into the FIRST teams. Coaches were Spencer Sella and Roger Flynn with Adam Six, Max Sella, and Lisa Brown as mentors. The FLL also produced a required presentation on “Sleep” (their topic choice”) which took first place in the divisional competition. Spencer was very impressed at how well the kids stayed on task and the amount of enthusiasm for the program, all because of their involvement with Snapology. Snapology has gone away but we purchased several of their kits and are now offering classes in what we call LEGO Tech. Classes have already started, ending the last of this month. We are partnering with the 4-H to help those kids with their robotics projects. Spencer Sella and Roger Flynn are teaching these classes.

Pottery classes continue to grow with several 21st Century kids from the school participating in four after school classes a week. Teddy Lewis also instructs some kids not signed up in the 21st century program who have really flourished and are becoming quite accomplished. All of the kids have had fun while honing their creative skills. We now have some adults belonging to the guild, helping to maintain our pottery expenditures as our programs are free to the kids, except the kids enrolled in the 21st Century after school program. The school pays for them. This helps us pay rent and utilities. The pottery building is open 5 days a week so be sure to contact Teddy at 406-439-9345 to try your hand at pottery.

Cooking, Sewing, Skiing, and Game Night are over for the summer but will start back up in season. The Fly-Tying class has a few more classes left, taught by Chris Christensen. We will try to run some Outdoor Awareness classes this summer and possibly develop some more outdoor programs too. We are still working on those. We are planning a Skateboard clinic in June so watch for that.

Another new clinic we sponsored was the MAPS Media Institute. This was a two-day event that went extremely well for several kids. This nonprofit organization has traveled all over Montana putting on these clinics teaching kids how to professionally produce videos, podcasts, and other media skills. The kids did several interviews with local kids and community members which will be edited into a two-minute video for STOKE. This will go on our website stokemt.org when finished. We hope to host at least one more MAPS clinic this year. Remember, all our programs are FREE to kids, in school or otherwise.

Submitted by John Hahn



STOKE Update

So far, STOKE’s kids have had a great year. The FIRST (For Inspiration and Recognition in Science and Technology) Robotics teams did very well for their first year with both the FIRST LEGO League and the FIRST Tech Challenge teams going to State with the FLL receiving 2nd place for the Robot Design Award and only one of 8 teams to get awards out of 35. The FTC kids were not so lucky as their team had dwindled to only 3 team members, not enough to operate their robot effectively. Many of the kids, having gone through several Snapology classes last year, hosted by



NON-PROFITS AND OTHER BENEFICIAL COMMUNITY ORGANIZATIONS

Organization Name	Contact Name	Email Address
American Foundation for Suicide Prevention	Katie Levine	klevine@afsp.org
American Legion Auxiliary Broadwater Unit #42	Reba Johnson	42rebe@gmail.com
American Legion Broadwater Post 42	Jen Dalrymple	broadwaterpost42@gmail.com
Association of Montana Turf, Ornamental, and Pest Professionals	Trudie Southwick	amtopp@amtopp.org
Big Sky Autism Project	Monique Prevel	bigskyautismproject@gmail.com
Billings Clinic Broadwater (Formerly Broadwater Health Center)	William Uptegrove	upty@outlook.com
Billings Clinic Broadwater Auxiliary	Donna Harper	vdoshowcase@yahoo.com
Boy Scouts of America	Josh Dutoit	joshua.dutoit@scouting.org
Broadwater Christmas Connection	Bret Anderson	bret.anderson77@yahoo.com
Broadwater Community Foundation	Carole Plymale	carole.plymale@gmail.com
Broadwater Community Health Foundation	Kwinci Tatarka	kktatarka@gmail.com
Broadwater Community Library (School and Public)	Angela Giono	agiono@townsend.k12.mt.us
Broadwater Community Theater	Destani Spencer	destanispenncer54@gmail.com
Broadwater Conservation District	Diane Johnson	broadwatercd@gmail.com
Broadwater County 4H Council	Karen Noyes	jknoyes@MT.net
Broadwater County Cattle Women	Melanie Kimpton Weyant	broadwatercattlewomen@gmail.com
Broadwater County Development Corporation	John Hahn	bcde@mt.net
Broadwater County Fair Board	Jessica Erickson	fair@co.broadwater.mt.us
Broadwater County Farm Bureau	Gail Vennes	glvennes@.mt.net
Broadwater County Lions Club	Richard Heida	iimimby@gmail.com
Broadwater County Public Health	Ruby Taylor	rtaylor@co.broadwater.mt.us
Broadwater County Search & Rescue	John Hedstrom	hedstromautorepair@gmail.com
Broadwater County Social Services Committee	Jill Flynn	jflynn@townsend.k12.mt.us
Broadwater County Trust Board	Aubra Lewis	aubra.lewis@co.broadwater.mt.us
Broadwater County Victim Witness Advocate	Brooke Dolan	bdolan@co.broadwater.mt.us
Broadwater County/City of Townsend Recreation Board	Dr Adam Six	broadwaterrecreation406@gmail.com
Broadwater Educational Foundation	Jackie Smith	BroadwaterEdFoundation@gmail.com
Broadwater FFA	Jemma Loughery	jloughery@townsend.k12.mt.us
Broadwater FFA Alumni and Supporters	Hugh Braaten	hugh@bestsod.com
Broadwater Food Pantry	Don Peace	cd2peace@mt.net
Broadwater Historical Society & Museum	Brian Kimpton	bkimpton57@gmail.com
Broadwater Mental Health Local Advisory Council	Mary Ellen Schnur	meventures@3riversdbs.net
Broadwater Rod and Gun Club	Brad Peck	debi.randolph@gmail.com
Broadwater Rodeo and Fair Association	Wynn Meehan	broadwaterrodeo@gmail.com
Broadwater Rural Fire District	Ed Shindoll	bcrfdfire@live.com;
Broadwater Shrine Club	Chuck McLane	cegamlane2@gmail.com
Broadwater-Missouri Water Users	Daniel Davis	bmwu@mt.net
Bulldog Pups Preschool	Jennifer Olinger	teamolinger5@gmail.com
Canton Church Restoration Inc.	Chris Wright	cwright12587@gmail.com
Canton Valley Woman's Club	Bonnie Berglund	
Canyon Ferry Physical Therapy	Dr. Wanda Lambott	canyonferrypt@mt.net
City of Townsend	Kari Williams	kari@townsendmontana.net
Crimson Bluff's Chapter of Lewis and Clark Trail Heritage Foundation	Mike Castleberry	radersburger@gmail.com

NON-PROFITS AND OTHER BENEFICIAL COMMUNITY ORGANIZATIONS

Organization Name	Contact Name	Email Address
Deep Creek Cemetery Association	John Hahn	hahnsupply@mt.net
Elkhorn Community Fellowship Church	Eric Crusch	icrusch2003@yahoo.com
Faith Baptist Church	Mike Wenzel	faithbaptisttownsend@gmail.com
Friends in Fellowship - Townsend	Paul Kroeger	pkroeger@itstriangle.com
Girl Scouts of America	Melissa Meissner	melissagunderjohn@yahoo.com
Helena Playable Playgrounds	Stacy Sommer	playablepark@yahoo.com:
Helping Hands Townsend	Dee Gannon	deedaleame@yahoo.com
Holy Cross Catholic Church	Father Cody Williams	frcwilliams@holycrossmt.org
Infinity Hope Counseling, LLC	Jennifer Beatty	jennifer@infinitehopellc.com
Knights of Columbus	Richard Majszak	richard.majszak@gmail.com
Missouri Valley Marketing	Nichole Brown	planning@co.broadwater.mt.us
Motion and Mind	Katherine Humphrey	mnm3hab@gmail.com
Mountain Valley Church (Formerly Alliance Bible Church)	Eric Krueger	erickruegercma@gmail.com
MSU Extension – Broadwater County	Allison Kosto	broadwater@montana.edu
MT Business Assistance Connection	Brian Obert	bobert@mbac.biz
MT Peer Network	Melinda Holum	Mholom@co.broadwater.Mt.us
MT Youth Apprenticeship Partnership Program	Kelly Creswell	kcreswell@reachhighermontana.org
Old Baldy Recreation Association (Old Baldy Golf Course)	Kory Bakkum	
Pathfinder Childcare	Amanda Hazlett	Amanda.Hazlett@myvillage.com;
Placer School	Gay Ann Masolo	gayannm@yahoo.com
Radersburg Baptist Church	Richard Summerlin	
Radersburg Cemetery Association	Brandon Hossfeld	
Radersburg Historical Preservation Inc.	Alan and Deb Smith	alndeb1956@gmail.com;
RMDC Homestead Manor Senior Apartments and Townsend Housing Senior Apartments	Julie Densmore	jdensmore@rmdc.net
Rocky Mountain Breeders Association (RMBA)	Jan Finn	2684hwy284@gmail.com;
Rocky Mountain Development Council (RMDC)	Samara Lynde	slynde@rmdc.net;
Rocky Mountain Development Council, Head Start	Ashley Pena-Larsen	apena@rmdc.net;
Rocky Mountain Development Council-Area IV Agency on Aging, Montana Senior Medicare Patrol (SMP)	Michele Mathot	mmathot@rmdc.net
Rotary Club of Townsend	Jeff Langlais	jclangl@yahoo.com;



NON-PROFITS AND OTHER BENEFICIAL COMMUNITY ORGANIZATIONS

Organization Name	Contact Name	Email Address
Sapphire Behavioral Health	LaReissa Swenson	lswensonsbh@outlook.com
Sarah Holland Daycare	Sarah Holland	hollandbigsky@q.com
Serenity Point Assisted Living	Heather LaCotta	heather@serenitypointliving.com
Set Free Christian Fellowship Townsend, Inc.	Bill Bergstad	bbergstad@gmail.com
Shepherd of the Valley Lutheran Church	Daryl Blumhagen	dumb@mt.net
Shoot for the Cure Montana	Mary Huth-Al Bodle	bodlehuth@gmail.com
Silver Sage Counseling	Teddy Lewis	teddylewis65@yahoo.com
Silver Springs Assisted Living	Jason George or Tiffany Rauser	silverspringsassistedliving@gmail.com
Songbird Pediatric Speech Therapy	Julie Swanson	
St. Peter's Townsend Clinic	Todd Wampler MD	townsendclinic@sphealth.org
STOKE: Science,Technology,Outdoors,Knowledge,Entrepreneurship	Tina Homann	albertinahomann@gmail.com
The Church of Jesus Christ of Latter-day Saints	Aaron Christensen	aaronchristensen406@gmail.com
The Friendship Center	Gina Boesdorfer	gina.b@thefriendshipcenter.org
The Learning Place	Chelsea Rauser	chelsearauser@gmail.com
The Lodge of Townsend	Tina Homann	townsendmtlodge@gmail.com
Thrivent Financial	Sarah Hamlen	sarah.hamlen@thrivent.com
Townsend Area Chamber of Commerce	Linda Fautsch	townsend43chamber@gmail.com
Townsend Booster Club	Natalie Horne	townsendboosterclub@gmail.com
Townsend Broadwater County Lions Club	Richard Heida	iimimby@gmail.com
Townsend Farmer's Market	Chris Hettinger	chris59644@gmail.com
Townsend Fast Pitch	Erin Fryer	townsendfastpitch@gmail.com
Townsend Garden Club & Study	Marilyn Lane	racing26@mt.net
Townsend Little Guy Wrestling	John O'Dell	jodell@townsend.k12.mt.us
Townsend United Methodist Church	Rev. Melelupe Moa	mele@fumcsl.org
Townsend Riders Horse Club	James Domino	jpdomino406@gmail.com
Townsend School Board	Jason Noyes	jknoyes@mt.net
Townsend School District #1	Susie Hedalen, Supt	shedalen@townsend.k12.mt.us
Townsend Senior Club	Carol Anderson	
Townsend Seventh Day Adventist Church	Craig Vietz	cargo3b@yahoo.com
Townsend Skating Rink, LLC	Joe Horne	natjoehorne@gmail.com
Townsend Tree Board	Patrick Plantenberg	m2andp2@mt.net
Townsend United Methodist Church	Rev. Melelupe Moa	mele@fumcsl.org
Townsend Wrestling	John O'Dell	jodell@townsend.k12.mt.us
Trailhead Christian Fellowship Church	Mark and Beth Roelofs	markbeth10@hotmail.com
Trauma Informed Advocates	LaReissa Swenson	
	Julie Swanson	
United Way of the Lewis and Clark Area	Emily McVey	Emily@unitedwaylca.org
Vet2Vet	Lowen Nunn	nunnlowen@gmail.com
Walleyes Unlimited of Montana, Upper Missouri River Chapter	Troy Warburton	umrcwalleyepresident@gmail.com